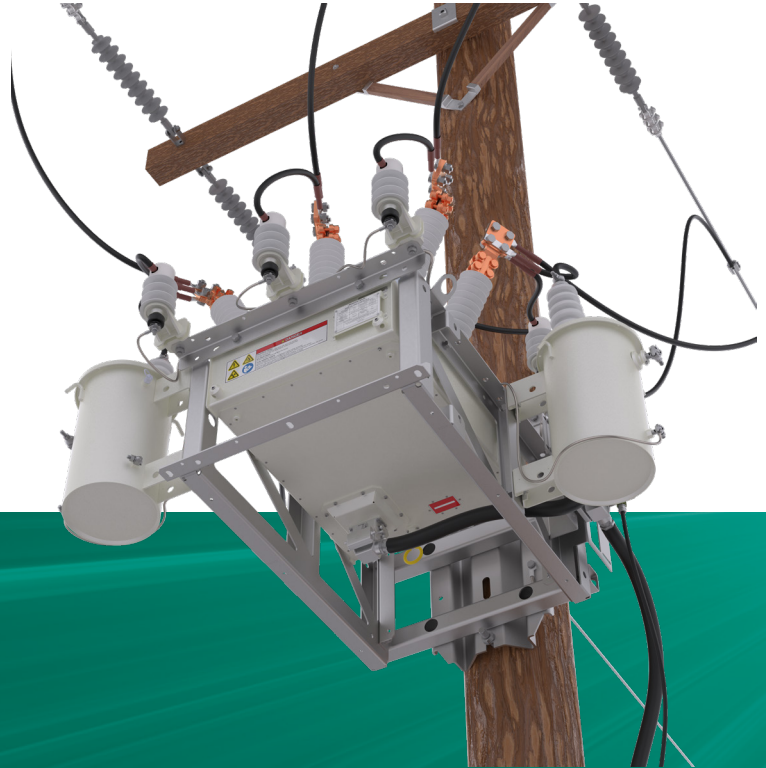


Rec25_Al_SSline Recloser

Triple-Single or Three-Phase Gang Operated
With Stainless Steel Mounting Kit

Compatible with SEL-651R and Beckwith M-7679 controls

**5 YEAR
WARRANTY**



- 15kV and 27kV systems
- 800A continuous rated current
- x6 voltage and x3/x6 current sensors built in (Loop Scheme Ready)
- Magnetically actuated vacuum interrupters
- Tested to 30,000 CO operations at full load
- Maintenance free and light weight
- 5-year warranty
- Compatible with 42-pin MRI and 32-pin controls interfaces

Tavrida Electric is a world-class manufacturer of vacuum interrupters, magnetic actuators, circuit breaker modules and automatic circuit reclosers. The Rec Series module is a field proven, reliable and flexible system that can be used as a switch, circuit breaker, substation breaker, sectionalizer or distribution recloser. There are over 90,000 outdoor switching modules installed worldwide demonstrating unrivalled dependability in the most extreme environments.

The Rec Series recloser is fully compatible with several recloser controls including the SEL-651R. The six (6) on-board voltage sensors allow the Rec Series recloser to be installed in either a radial or loop scheme configuration. Radial installations can be quickly changed to a loop scheme configuration by simply reprogramming the control.



Basic Operating Parameters

Rated Data

Rated voltage (U_r), up to	15.5kV	27kV
Rated continuous current (I_r)	800A	
8-hour overload current	960A	
Rated power frequency withstand voltage (U_d), 1 min dry	60kV	
Rated power frequency withstand voltage (U_d), 10s wet	55kV	
Rated lightning impulse withstand voltage closed contacts/open contacts (peak) (U_p)	150/125kV	
Rated short-circuit breaking current (I_{sc})	16kA	12.5kA
Rated short-circuit making current, peak	41.6kA	32.5kA
Rated short-time withstand current, 4s (I_k)	16kA	12.5kA
Rated frequency	50/60Hz	

Switching Performance

Mechanical life (CO cycles)	30,000
Operating cycles, rated current (CO cycles)	30,000
Electrical endurance, breaking current (O-CO cycles)	100
Closing time ¹	<40ms
Opening time ¹	<15ms
Interrupting time ¹ , for 50/60 Hz	<25/23 ms
Rated operating sequence	O-0.2s-CO-1.5s-CO-2s-CO-2s-CO ²

1 - Switching module closing, opening and break times excluding control module recognition time.

2 - Fastest operating sequence when used with SEL-651R-2 Recloser Control. Subject to change when used with different controls.

Standards

International Standard	IEC 62271-100, IEC 62271-111
American Standard	IEEE C37.60

Other Data

Current Sensing	3/6 current transformers ¹
Voltage Sensing	6 Voltage Sensors
Voltage sensors ratio error	1.0 % for all 6 sensors
Main contact resistance (not more than)	95μOhm
Degree of protection	IP65
Weight	176 lbs. (80 kg)

1 - 600:1 A ratio is standard. 200:1 is available with gang-operated OSM25_AI_5.

Recloser components

Outdoor Switching Module

The outdoor switching module is designed for use as an automatic circuit recloser, a sectionalizer on overhead distribution lines, and as an outdoor switching module in distribution substation applications for voltages up to 27 kV.



Recloser control

The Tavrída Electric recloser is compatible with SEL-651R MRI control as well as with customized cabinets.



Umbilical cable

Connection between the switching module and the control cabinet is accomplished by a single umbilical cable which can be provided in multiple lengths.

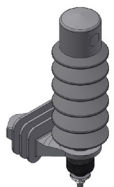


Mounting kit

Tavrída Electric offers stainless steel pole mounting kit option with variable accessories. Pole mounted reclosers are fitted with all requested options in a single lift package.



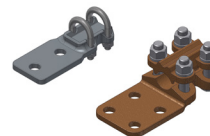
Other components



Surge arresters



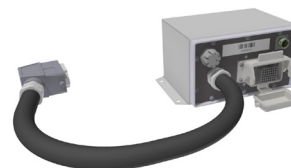
Wildlife covers



Two or four hole NEMA pads for primary connection



Auxiliary transformer, 2-hanger, single bushing, 120 VAC secondary, steel tank, with internal weak link and wildlife protection

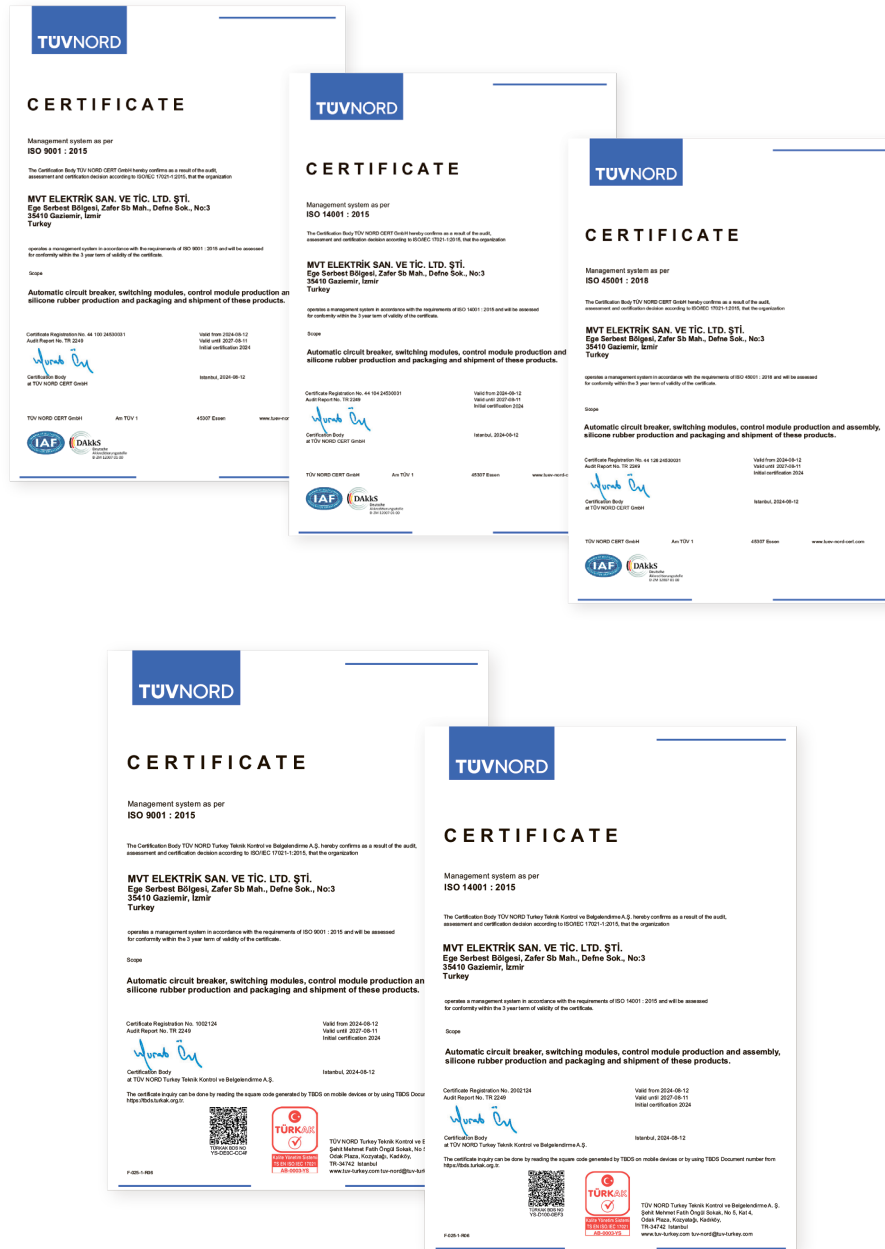


Junction box providing variable CT ratio for OSM25_AL_5 (600:1, 200:1) and optional safe trip functionality.



Certificates

ISO 9001:2015, ISO 14001:2015 and ISO 45001:2018



If you would like to obtain more detailed information about our solutions or become one of our local partners, please feel free to contact us

NORTH AMERICA (USA)

Tavrida Electric North America (US) Inc.

2000 Tall Pines Dr. Suite 200
Largo, FL 33771
USA

Phone: +1 (604) 540-6604

Fax: +1 (604) 540-6604

E-Mail: info@tavrida-na.com

NORTH AMERICA (CANADA)

Tavrida Electric North America Inc.

726 Chester Rd
Delta, BC V3M 6J1
Canada

Phone: +1 (866) 551-8362

Fax: +1 (604) 540-6604

E-Mail: info@tavrida-na.com