

VCB15 LD Series

Three-Phase and Single-Phase
Vacuum Circuit Breakers

**5 YEAR
WARRANTY**



Tavrida Electric solutions ensure reliable power system operation in more than 80 countries.



- 17.5 kV systems
- 800A continuous rated current
- 20 kA short circuit breaking current
- Magnetically actuated vacuum interrupters
- More than 50 000 CO operations at full load
- Maintenance free
- Any spatial orientation
- The lightests weight of 26 kg

Tavrida Electric is a world-class manufacturer of medium voltage switchgear such as Vacuum Circuit Breakers & Automatic Circuit Reclosers. The ISM series circuit breaker is the result of extensive R&D efforts to provide outstanding performance for compact switchgear designs, retrofit programs, and special applications.

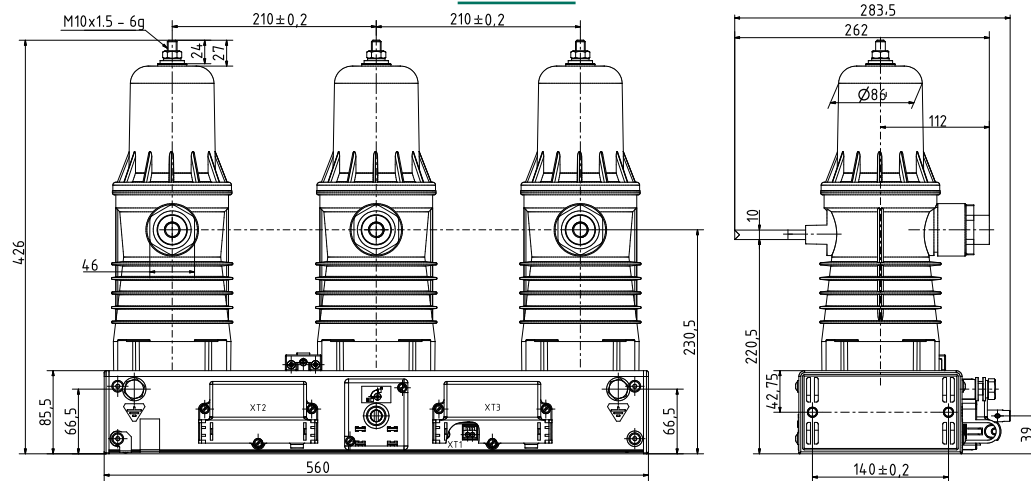
After 27 years on the market, the ISM series install base has reached over 500,000 units worldwide continuing to resolve most ambitious customer problems.

Applications:

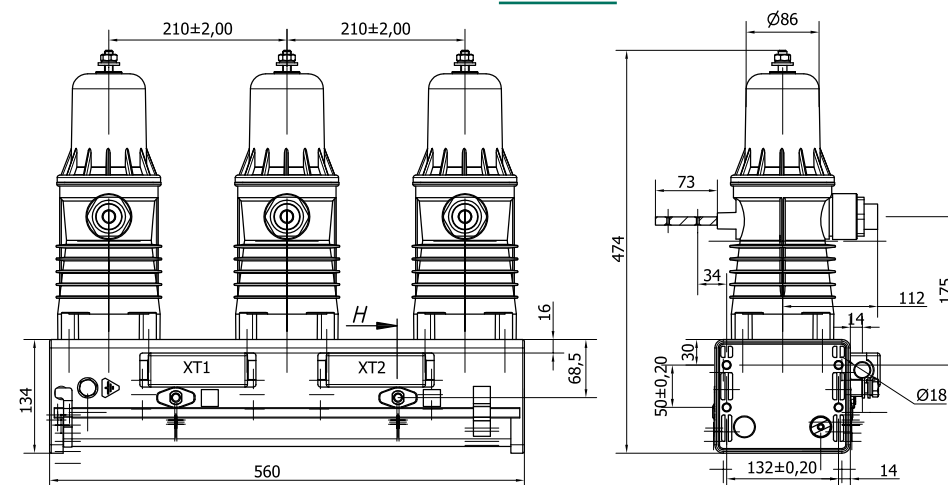
- Cabina Primaria
- Switchgear panels
- Retrofit solutions
- Fast transfer switch
- Controlled switching



VCB15_LD8



VCB15_LD1



Accessories and Spare Parts



Indoor switching module (ISM) and control module (CM):

The ISM and the CM (the CM is a microprocessor based controller that provides ISM operation, protection and data logging functions) can be ordered separately as spare parts



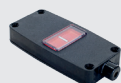
Manual generator:

The manual generator is used to supply the circuit breaker with power in case the main auxiliary power supply is not available



Interlocking kits (for VCB15_LD8 only):

The kit attaches to the ISM shaft and serves as a manual trip / lockout accessory (the push button kit serves only as a manual trip accessory)



Position indicator (for VCB15_LD8 only):

The position indicator is used together with indication cable to indicate the ISM main contacts state



ISM Auxiliary switches board (for VCB15_LD8 only):

Auxiliary switches board for the ISM (VCB15_LD8 has 2 slots for auxiliary switches boards. Each auxiliary switches board has 3NO+3NC contacts installed)

Basic Operating Parameters

PARAMETER	VCB15_LD8	VCB15_LD1
Rated voltage (Ur)	17.5 kV	17.5 kV
Rated normal current (Ir)	800 A	800 A
Rated power frequency withstand voltage (Ud)	38 (42) kV*	38 (42) kV*
Rated lightning impulse withstand voltage (peak) (Up)	95 kV	95 kV
Rated short-circuit breaking current (Isc)	20 kA	20 kA
Rated frequency (fr)	60 Hz	60 Hz
Mechanical life (CO-cycles)	> 50,000	30,000
Operating cycles, rated breaking current (CO-cycles)	100	100
Closing time	≤ 70 ms**	≤ 70 ms
Opening time	≤ 35 ms**	≤ 35 ms
Break time	≤ 45 ms**	≤ 45 ms
Weight	26 kg	36 kg
Temperature range	-25 °C ... +55 °C	-25 °C ... +55 °C
Number of available auxiliary contacts	1 bistable 3 NO + 3 NC 6 NO + 6 NC	6 NO + 6 NC
Rated auxiliary supply voltage	24V to 60V DC or 110V to 220V AC/DC	

* Value in brackets - tested in accordance with GB1984-2003

** Special configuration available with opening times of 13 ms, closing times of 35 ms and breaking time of 23 ms.

Tavrida Electric do Brasil

Av. Ireno da Silva Venâncio, 199, GP04A - Protestantes 18111-100, Votorantim / SP, Brazil

Phone: +55 (15) 3243-2555

E-Mail: info@tavrida.com.br



TAVRIDA ELECTRIC
Excellence in Engineering