

Rec35_Smart5_HDG Recloser

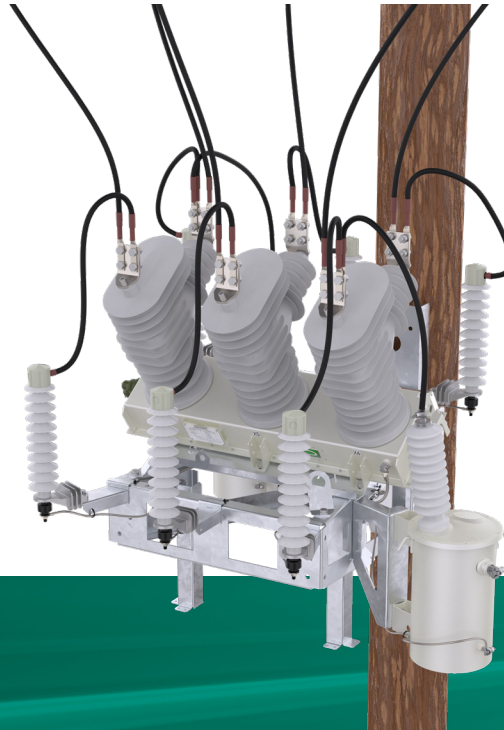
38 kV Three-Phase Gang-Operated Design

Compatible with SEL-651R

**5 YEAR
WARRANTY**



Tavrida Electric solutions ensure reliable power system operation in more than 80 countries.



The most compact 38kV recloser in the world!

- Up to 1250A continuous rated current
- x6 voltage and x3 current sensors built in
- Fits perfect in normally open and sectionalizing applications
- Voltage sensors with 0.5% accuracy
- Magnetically actuated vacuum interrupters
- Tested to 30,000 CO operations at full load
- Maintenance free and light weight
- 5-year warranty

Tavrida Electric is a world-class manufacturer of vacuum interrupters, magnetic actuators, circuit breaker modules and automatic circuit reclosers. The Rec35_Smart5_HDG series module is a field proven, reliable and flexible system that can be used as a switch, circuit breaker, substation breaker, sectionalizer or distribution recloser.

The Rec35_Smart5_HDG series recloser is fully compatible with the SEL-651R recloser control. The six (6) on-board voltage sensors provide an accuracy of 0.5% across a broad temperature range. It allows the recloser to be installed in radial or loop scheme configuration. Radial installations can be quickly changed to a loop scheme configuration by simply reprogramming the control.



Basic Operating Parameters

Rated Data	Smart5(100)	Smart5(600)	Smart5(1200)
Rated voltage (U_r), up to		38kV	
Rated continuous current (I_r)	100A	600A	1250A
Rated power frequency withstand voltage (U_d), 1 min dry		70kV	
Rated power frequency withstand voltage (U_d), 10s wet		70kV	
Rated lightning impulse withstand voltage (peak) – BIL (U_p)		170kV	
Rated short-circuit breaking current (I_{sc})		16kA	
Rated short-circuit making current, peak		41.2kA	
Rated short-time withstand current, 4s (I_k)		20kA	
Rated peak withstand current (I_p)		52kA	
Rated frequency		50/60Hz	

Mounting Anchoring Holes Distances for Foundation Pad

	549..604 mm x 1309..1329 mm
Hot-dip galvanized design ²	218..935 mm x 1055..1329 mm
	950..970 mm x 456..1180 mm

Switching Performance

Mechanical life (CO cycles)	30,000
Operating cycles, rated current (CO cycles)	30,000
Electrical endurance, breaking current (CO cycles)	100
Closing time ¹	<60ms
Opening time ¹	<15ms
Break time ¹	<25ms
Rated operating sequence	Refer to control manual

Standards

International Standard	IEC 62271-100, IEC 62271-111
American Standard	IEEE C37.60

Other Data	Smart5(100)	Smart5(600)	Smart5(1200)
Current Sensing	3 built-in current transformers		
	100:1, C20	600:1, C100	1200:1, C100
Voltage Sensing	6 built-in voltage sensors		
Voltage measurement accuracy	+/-0.5%		
Main contact resistance (not more than)	32 μ Ohm		
Degree of protection	IP65		
Weight (only switching module)	205 lbs. (95 kg)		
Temperature	-40 ... 131 °F (-40 ... +55 °C)		

¹ Switching module closing, opening and break times excluding control module recognition time.

² Variable distances are provided by design of mounting holders

Recloser Components

Outdoor Switching Module

The outdoor switching module is designed for use as an automatic circuit recloser, a sectionalizer on overhead distribution lines, and as an outdoor switching module in distribution substation applications for voltages up to 38 kV.



Recloser Control

The Tavrída Electric recloser is compatible with SEL-651R MRI control.



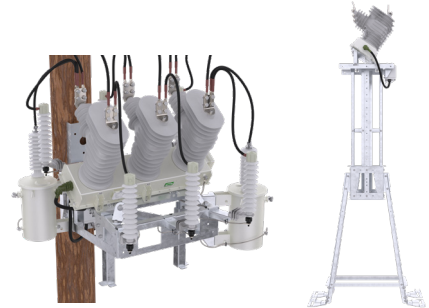
Umbilical Cable

Connection between the switching modules and the control cabinet is accomplished with an umbilical cable which can be provided in multiple lengths. Two types of cables can be used depending on connection type - direct SEL-OSM or through junction box with safe trip functionality



Mounting Kit

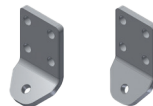
Tavrída Electric offers Hot Dip Galvanized steel pole mounting kit and substation mounting kit option with variable accessories.



Other Components



Surge arresters



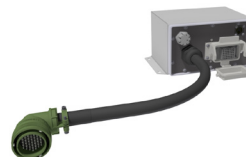
Four hole NEMA pads for primary connection



Auxiliary transformer, 2-hanger, single or dual bushing, 120 VAC secondary, steel tank, with internal weak link and wildlife protection



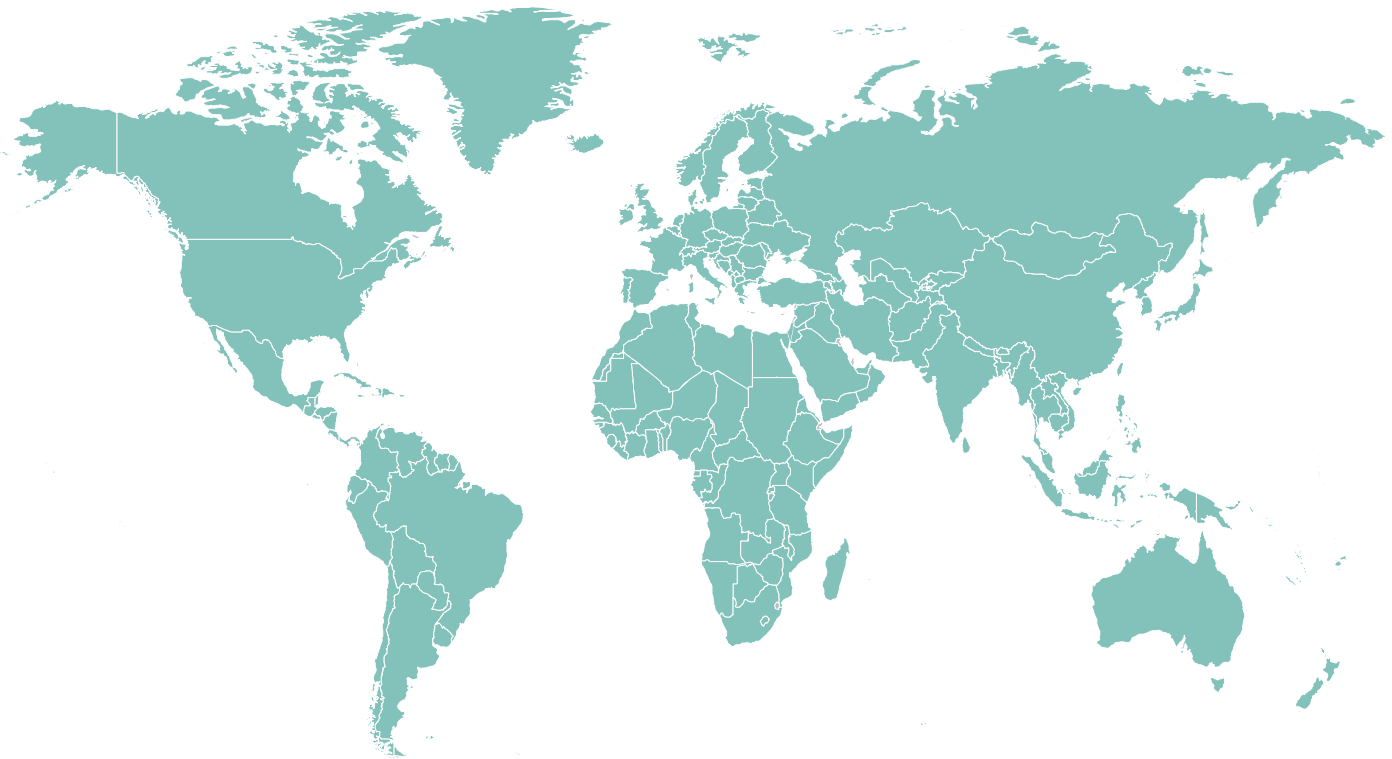
Wildlife protective covers



Junction box providing safe trip functionality.



If you would like to obtain more detailed information about our solutions or become one of our local partners, please feel free to contact us



NORTH AMERICA (USA)

Tavrida Electric North America (US) Inc.

2000 Tall Pines Dr. Suite 200
Largo, FL 33771

USA

Phone: +1 (604) 540-6604

Fax: +1 (604) 540-6604

E-Mail: info@tavrida-na.com

NORTH AMERICA (CANADA)

Tavrida Electric North America Inc.

1105 Cliveden Ave.
Delta, BC V3M 6G9

Canada

Phone: +1 (866) 551-8362

Fax: +1 (604) 540-6604

E-Mail: info@tavrida-na.com

BRAZIL

Tavrida Electric do Brasil

Av. Ireno da Silva Venâncio, 199
GP04A - Protestantes

18111-100, Votorantim / SP, Brazil

Phone: +55 (15) 3243-2555

Fax: +55 (15) 3243-4233

E-Mail: info@tavrida.com.br

EUROPE

Tavrida Electric GmbH

Im Leimen 14, 88069

88069 Tettngang,

Germany

Phone: +49 7542 94 678 51

Fax: +49 7542 94 678 61

E-mail: info@tavrida.de

SOUTH AFRICA

Tavrida Electric Africa (Pty) Ltd.

Unit 8, N12 Industrial Park,

188 Dr Vosloo Road, Bartlett,

Boksburg, 1459 South Africa

Phone: +27 (11) 9142-199

Fax: +27 (11) 9142-323

E-Mail: support@tavrida.co.za

CHINA

Tavrida Electric Qindao Co. Ltd.

No. 336, Songling Road, Laoshan District

266104 Qingdao

China

Phone: +86 (532)-55552366

Fax: +86 (532)-55552377

E-Mail: info@tavrida.cn

